



Duo Touch

SCAN►X® Duo Touch

EFFICIENCY WITHOUT COMPROMISE.

The digital radiography system with a touchscreen, for all intraoral formats.

**AIR
TECHNIQUES** equipped for life®



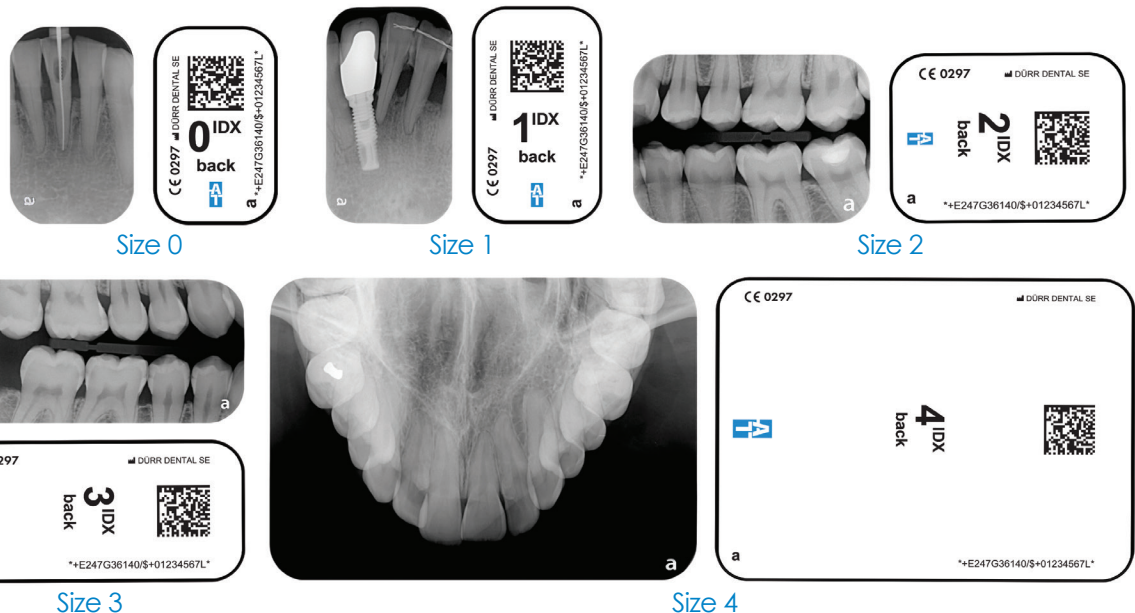
The New Standard for Digital X-Rays

With innovative and practical solutions, Air Techniques has been shaping the field of dental imaging for almost five decades. In the field of digital X-rays with PSPs in particular, Air Techniques technology offers imaging of the highest resolution currently possible. Therefore, it meets the needs of all your diagnostic requirements.

The ScanX Duo Touch digital radiography system enables the intuitive, efficient and time-saving digitization of PSPs for all intraoral formats, sizes 0-4. Its large touchscreen, easy-to-use interface, and dual slots for simultaneous scanning contribute to this. Thanks to WiFi, the device is exceptionally flexible. This makes PSP diagnostics quicker, more reliable and more convenient with the ScanX Duo Touch.

Intuitive Controls - Optimum Workflow

The high resolution touchscreen display allows for ease of use and provides excellent image quality. The preview function for the scanned image allows X-ray results to be quickly checked. Preset scan modes provide quick and reliable scanning.



Benefits at a Glance:

- High resolution image quality for easier diagnosis
- 2 slots for efficient workflow
- For all intraoral formats (0,1,2,3,4) IDX PSPs
- High-resolution glass touchscreen
- PC connection via WiFi/LAN
- AI: Automatic image rotation with VisionX
- Preview and View X-ray Images
- Easy to Clean & Disinfect
- Intuitive Controls



A Great Feeling of Efficiency and Reliability

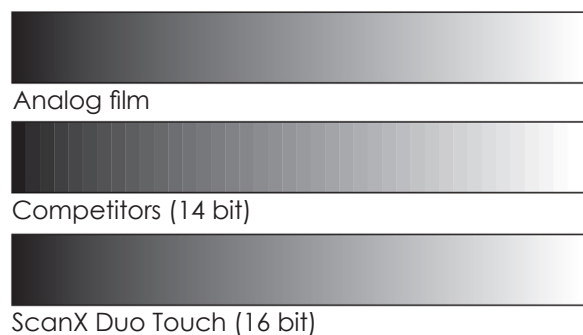
Air Techniques IDX PSP technology makes it very easy to switch to a digital workflow; thanks to the wide range of formats, the ScanX Duo Touch allows you to process on a single device. Since the X-ray process and image formats do not differ from those for analog film, there's a minimal learning curve.

The thin, flexible plate offers clear advantages for you, your team and your patients: It is easier to position and sits more comfortably in the patient's mouth. Once the image has been taken, it appears on the monitor in just a few seconds. Thanks to an integrated erasure function, the durable IDX PSP is then immediately ready to be used again.

With advances in Artificial Intelligence (AI) software, the new Air Techniques ScanX IDX PSP image plates help to ensure increased diagnostic reliability. The individual ID of each IDX image plate is saved within the scanned image. As a result, if the image quality of an image plate starts to deteriorate or is damaged, it can be easily identified. Additionally, if a plate is exposed from the wrong side, our VisionX imaging software, using AI, will alert the user. Finally, AI can automatically rotate the image within VisionX for the ultimate workflow efficiency. Since the ScanX Duo Touch only accepts IDX image plates, it is ensured that the very high-quality standards from Air Techniques can be maintained.

Excellent Image Quality

Digital filters for reliable diagnostics: The Air Techniques imaging software automatically optimizes and saves all images. Diagnosis-supporting filters can also be used to adjust the contrast and sharpness of images. This enables a more detailed diagnosis. The enhanced quality of images allows the operator to convincingly explain potential options and treatment plans to patients.



Stand-Alone Mode

The ScanX Duo Touch can also work independently. You can still scan and save X-ray images even if the IT network is down. The images are stored securely on the internal SD card and are transferred to the database later on. If necessary, the images can be displayed on the high-resolution screen.

ScanManager - For Even More Efficient Workflow

You can send scan jobs to the ScanX Duo Touch from any workstation. You then select and start the required job on the ScanX by touching the screen. Afterwards, the image is automatically sent to the appropriate workstation. Multiple scan jobs can be simultaneously requested from different stations.

WiFi Functionality

The WiFi capability allows the ScanX Duo Touch to be easily integrated into an existing network. You can place the unit anywhere in the office. Connecting via LAN interface is also possible.



airtechniques.com

Specifications

ScanX Duo Touch (J1200)

Screen	7" touchscreen, 800 x 480 pixels, 16.7 million colors
Plate sizes	All intraoral formats, sizes 0, 1, 2, 3, 4 IDX PSPs
Resolution (lp/mm)	40 (Theoretical), 20 (Effective)
Greyscale (bits)	65,536 (16)
Weight	17 lbs
Dimensions WxDxH	9.2" x 11.5" x 14.9" / 23.4 x 29.3 x 37.9 cm
Interfaces	WiFi, LAN

IDX PSP / Monarch PSP Cleaning Wipes

J1240-0	Intraoral IDX PSP & Barrier Envelope Pack Size #0 (Includes: QTY of 2 IDX PSPs & QTY 1,000 Barriers Envelopes)
J1240-1	Intraoral IDX PSP & Barrier Envelope Pack Size #1 (Includes: QTY of 2 IDX PSPs & QTY of 1,000 Barriers Envelopes)
J1240-2	Intraoral IDX PSP & Barrier Envelope Pack Size #2 (Includes: QTY of 2 IDX PSPs & QTY of 1,000 Barriers Envelopes)
J1240-3	Intraoral IDX PSP & Barrier Envelope Pack Size #3 (Includes: QTY of 2 IDX PSPs & QTY of 1,000 Barriers Envelopes)
J1240-4	Intraoral IDX PSP & Barrier Envelope Pack Size #4 (Includes: QTY of 1 IDX PSPs & QTY of 100 Barriers Envelopes)
B8910	Cleaning Wipes for Phosphor Plates (PSPs) (Box of 50)



CORPORATE HEADQUARTERS
Air Techniques, Inc.
1295 Walt Whitman Road
Melville, New York 11747-3062
800-247-8324



ScanX is a registered trademark
of Air Techniques, Inc.
© Copyright 2021
PN 9922-595 Rev. D

**AIR
TECHNIQUES** equipped for life®